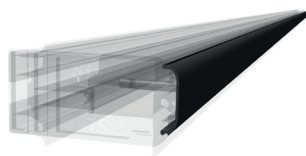


SL ENERGY WALL



SL Rack

Schletter Ludwig



Visit our
website:
www.sl-rack.com

Find us on



GERMAN INNOVATION

Innovative Product Development



„Our racking systems have been developed since 1996 and are continuously optimized. Pre-assembled components that are quick and easy to install, prompt order processing, a reliable product supply and cost-effectiveness are our focus.

All our components follow a convenient top-down installation approach, ensuring a smooth and timesaving workflow. SL Rack systems are installer-friendly, intuitive and standardized, while still having the flexibility to adapt to each respective project site.“

Sincerely,

Ludwig Schletter

SL Rack in numbers:



26..... Years of experience

30..... GW installed worldwide

15..... Product specialists are happy to support you!

EU..... Almost exclusively manufactured in Germany and Europe

100% ... Stainless steel and aluminum- **extremely durable**



Visit our
website:
www.sl-rack.com



Check out our
YouTube-channel:
[Installation videos »](#)

*Our warranty conditions apply. They are available at www.sl-rack.com

Advantages of SL Energy Wall

- » Quick and easy installation
 - => Pre-assembled
 - => Only one tool: Torx 40
- » Installation according to module manufacturer's specifications
- » Module frames 28-50 mm
- » Integrated grounding
- » Water drainage included
- » No rattling noise
- » Sleek look
 - => Low system height
 - => Profile adapts to the height of the module



Facade System Bottom, Mid and Top

- » Completely pre-assembled
- » Available in 1790 mm for individual module installation in landscape (module length up to 1790 mm) as well as 4575 mm for four panels in portrait (module width 1134 mm)
- » Material: Aluminum (profile), stainless steel (hardware)



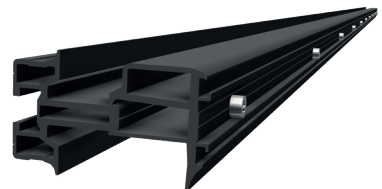
FACADE SYSTEM BOTTOM

Item no. 36121-1790	EAN 4262355112968	Facade System Bottom - 1790 mm, black anodized	40 Pcs. per PU
Item no. 36121-4575	EAN 4262355112760	Facade System Bottom - 4575 mm, black anodized	40 Pcs. per PU



FACADE SYSTEM MID

Item no. 36122-1790	EAN 4262355112951	Facade System Mid - 1790 mm, black anodized	40 Pcs. per PU
Item no. 36122-4575	EAN 4262355112784	Facade System Mid - 4575 mm, black anodized	40 Pcs. per PU

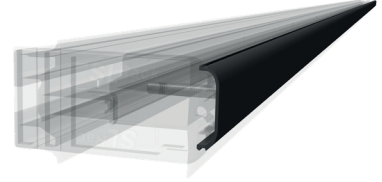


FACADE SYSTEM TOP

Item no. 36123-1790	EAN 4262355112944	Facade System Top - 1790 mm, black anodized	40 Pcs. per PU
Item no. 36123-4575	EAN 4262355112807	Facade System Top - 4575 mm, black anodized	40 Pcs. per PU

Facade System Cover

- » Conceals the bolts of the profile
- » Easy click-mount
- » Provides an overall aesthetic appeal
- » Material: Aluminum



VARIANTS

Item no. 36105-1790	EAN 4262355112975	Facade System Cover - 1790 mm, black anodized	120 Pcs. per PU
Item no. 36105-4575	EAN 4262355112746	Facade System Cover - 4575 mm, black anodized	120 Pcs. per PU

Facade System End Cap

- » For a clean finish at the ends of the profiles
- » Integrated height adjustment
- » Kit consists of 2 plastic end caps
- » Provides an overall aesthetic appeal
- » Material: Plastic



Item no. 31106-00	EAN 4262355112722	Facade System End Cap, black	200 Pcs. per PU
-------------------	-------------------	------------------------------	-----------------

Facade Fastener

- » For attaching the facade system to the wall
- » Installation in combination with hanger bolt
- » Can be mounted upwards and downwards
- » Profile alignment down to the millimeter
- » Ensures rear ventilation of 6 cm
- » Disappears behind the modules
- » Material: Aluminium (fastener), stainless steel (hardware)



Item no. 31107-00	EAN 4262355112920	Facade Fastener	80 Pcs. per PU
-------------------	-------------------	-----------------	----------------

External Connector for all RAILS (excl. RAIL 120)

- » Easy and fast connection of profiles
- » Convenient installation from the top
- » Only one tool required: Torx 40
- » Compatible with other profiles on the market
- » Universally applicable for all RAILS (excl. RAIL 120) with the same static values as a continuous rail
- » Due to a height of just 20 mm, the External Connector RAIL 3.0 is ideal for flat structures
- » Also available in black anodized

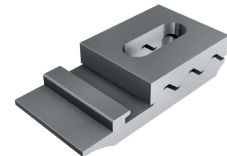


VARIANTS

Item no. 81110-00	EAN 4262355112906	External Connector RAIL 3.0	40 pcs. per PU
Item no. 86110-00	EAN 4262355112913	External Connector RAIL 3.0, black anodized	40 pcs. per PU

Hanger Bolt Adaptor 2.0

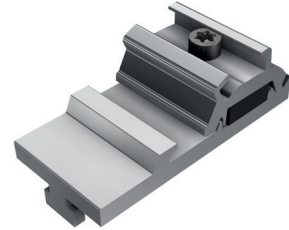
- » Universal mounting of any SL Rack RAIL and rails of direct competitors with a bottom groove of 10,5 mm
- » Upper and lower mounting attachments with ribbed profile for high fitting accuracy and stability
- » Suitable for hanger bolts M10 and M12



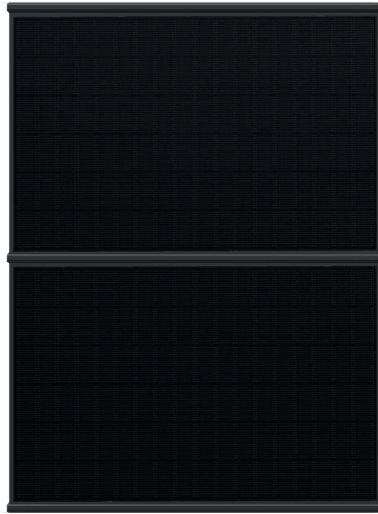
Item no. 11302-12	EAN 4262355112586	Hanger Bolt Adaptor 2.0 M12	100 pcs. per PU
--------------------------	-------------------	-----------------------------	-----------------

Cross Connector

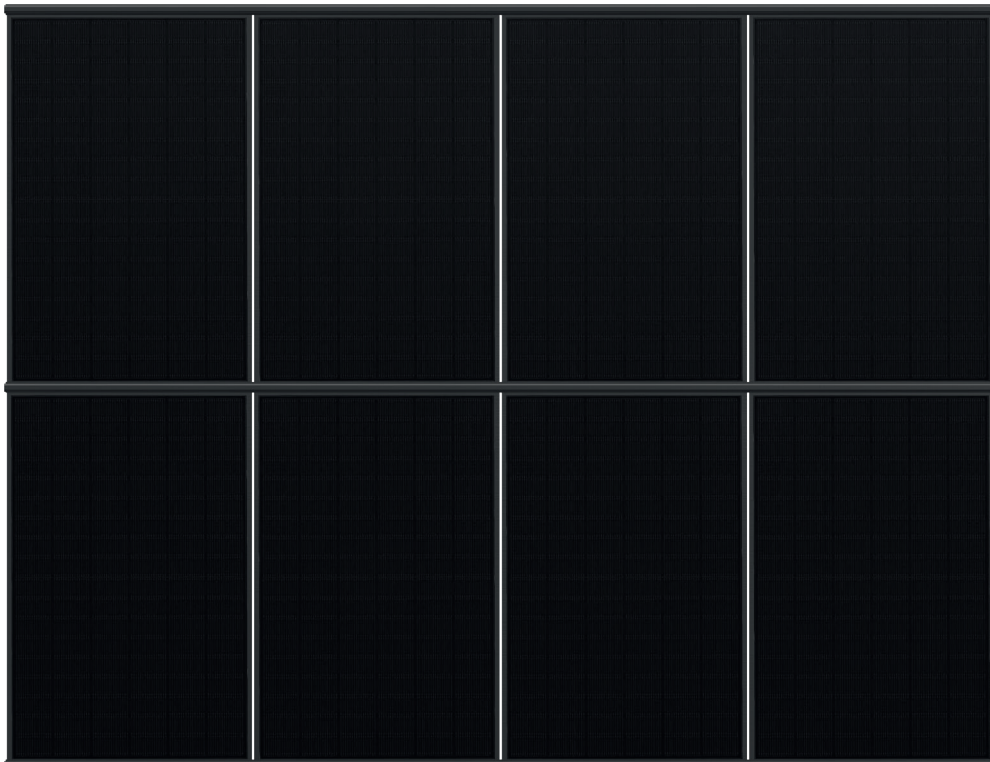
- » Quick and easy 90° cross connection to RAIL 35, 40, 60, 120 and RAIL 7
- » Convenient and time-saving installation from the top
- » Only one tool required: Torx 40
- » Easy to release and reposition
- » Suitable to connect to a lightning protection system
- » Extremely low design, only 20 mm high
- » Easy handling
- » Convenient attachment to the rail
- » Works with all RAILS as well as rails of the facade systems



Item no. 91204-00	EAN 4262355112517	Cross Connector 2.0	100 pcs. per PU
--------------------------	-------------------	---------------------	-----------------



*1 module-wide installation in landscape
with a profile length of 1790 mm*



*4 modules in portrait
with a profile length of 4575 mm*



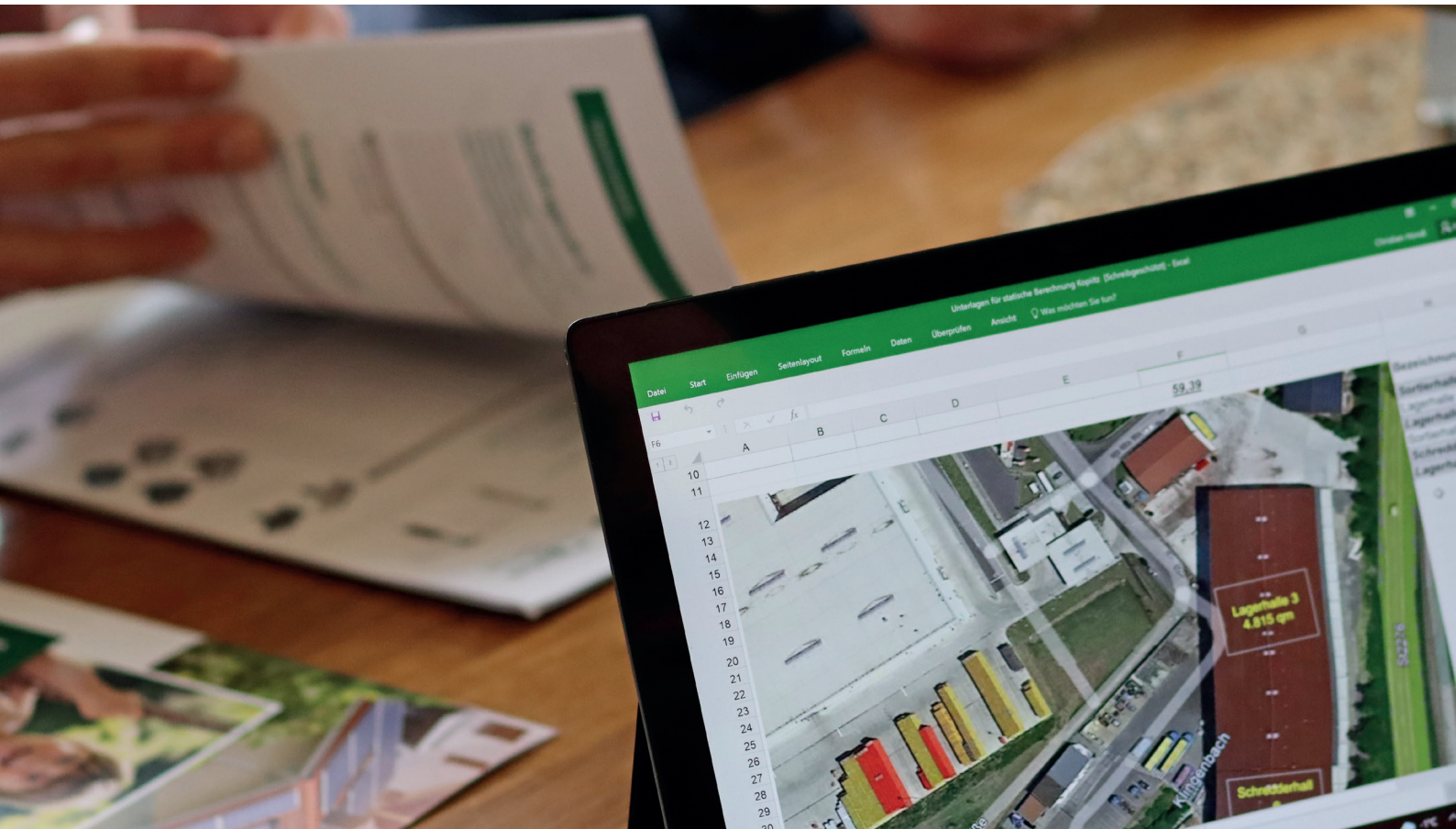
Cover, end cap and Facade System Mid



Cover, end cap and Facade System Top

[illegible]

[illegible]



SL Rack

[YouTube](#)SL Rack
[Website](#)SL Rack
[Online ordering
system](#)Contact us
for an offer:

SL Rack GmbH
Münchener Straße 1
83527 Haag i. OB
Email: sales@sl-rack.de
Phone: +49 8072 3767-0
www.sl-rack.com